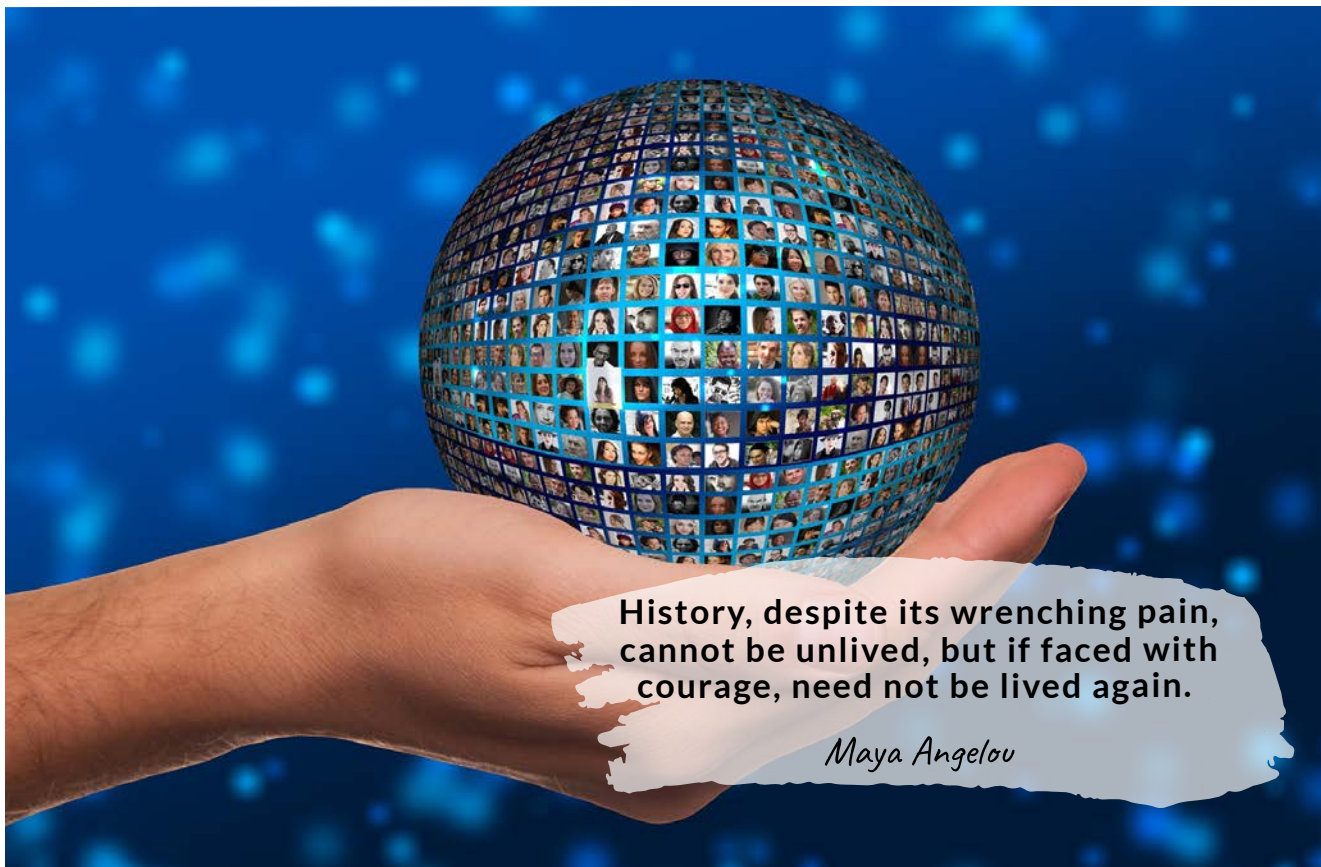


WORLD CIVILIZATION I

Online

10035



COURSE DESCRIPTION

This course surveys world civilization from the pre-history period up to 1500 and includes a comparative study of social, economic, and political formation and their interaction with culture. Major topics include the development of major civilizations, migration and settlement patterns, religion, philosophy, and technology.

Student Learning Outcomes

By the end of the course, you will....

1. Define the basic components of culture and explain the impact of cultural exchange in the development of early world civilization.
2. Identify, describe, and locate individuals and people groups that have contributed to the political, economic, and social development of world civilization up to 1500.
3. Analyze the major world religions and philosophies and compare their implications for cultural development.
4. Formulate a chronology of world history up to 1500.
5. Locate (in college library and internet) and differentiate between primary and secondary sources in World History. Use both source types to create and support an argument in historical writing.

Welcome to World Civilizations!

I am honored and excited to be a part of your quest to look into the past. **Get ready for OURSTORY!!!**

COURSE FACILITATOR

I am Son Nguyen, your facilitator and collaborator for this course. My goal is to be your guide to seeing a different perspective of our past.

By the end of this semester, you will know some new things about our nation's past, reinforce some things you already know but in a different light, and gain a better perspective of responsible citizenship in the society/world you live in.

HOW TO CONTACT YOUR FACILITATOR

You can reach me with whatever method you are most comfortable with. That being said, the fastest way to get a reply from me is usually with email or text. I encourage all students to "drop-in" at least once in the semester during office hours listed below.

I will reply to all inquiries within 24 hours.

C o n n e c t



PHONE/TEXT

Office:
310-233-4066

Home/Text:
(714)-345-6133

EMAIL

nguyens@laccd.edu



OFFICE HOURS

Tues: 10 - 11a
Wed: 10 - 11a

SOCIAL MEDIA

IG: @profnguyen
Twitter: @professornguyen
FB: "son nguyen
harbor college"

MY TEACHING PHILOSOPHY

My teaching philosophy is deeply embedded in the fabric of my historical evolution. As an immigrant to this country and having grown up in poverty in the deep South, I'm a firm believer in hard work, respect, and humility. Everyone who walks through my classes can succeed and achieve whatever they want to through dedication and hard work. I support my students as individuals and try to listen to my students and their needs (within reason) knowing that everyone of us is unique in our own ways.

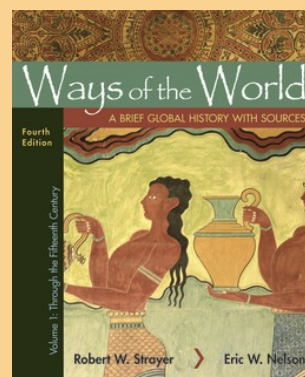
At the same time, I am a firm believer in structure and respect. In short, I am fair but very, very firm. I center my classes upon the notion of reciprocity; rather than me teaching you everything, it's a journey where we all learn from one another seeking self-improvement each and every day. I try to develop a "mentor" relationship with my students, which means that I am no better than you (I just have a little bit more experience and certain expertise in History).

If you are willing to put in all you have, think outside the box, create and reach for your goals then success will be just around the corner.

REQUIRED TEXTS

The required text is below for the class:

Ways of the World: A Brief Global History with sources,
Vol. 1. 3rd edition or later. Strayer and Nelson.
ISBN: 1319018416



COURSE REQUIREMENTS

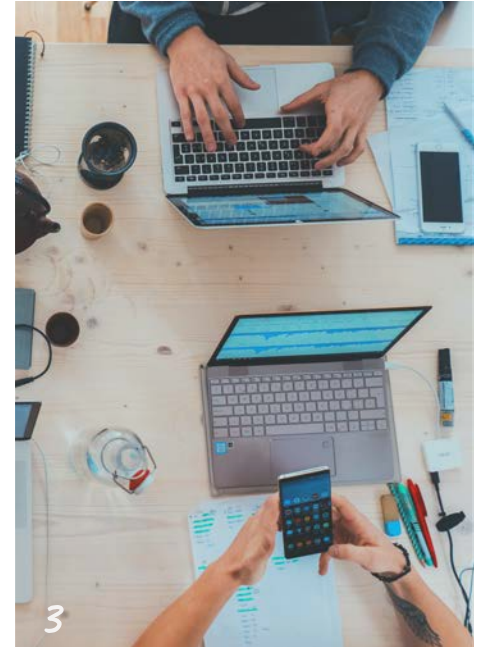
Your recipe for success in this class will consist of the following three ingredients. . .



1



2



3

ATTENDANCE

"80% of Success is Showing Up"

I will make every effort to make the online experience as enjoyable and informative as possible but it is up to you to put in the effort. This includes logging into the class on Canvas daily and actively participating in the class.

ADD/DROP*

You may be excluded from the class if you miss too many assignments or are not actively engaging in the class.

If you neglect to drop classes that you are no longer attending, you may receive a failing grade.

The last day to drop a full-term class to receive a refund without incurring fees or a grade of a "W" varies. Check your class schedule for the exact dates.

The last day to drop a full-term class with a "W" varies. Check your class schedule for the exact dates.

CLASS PARTICIPATION

"A class with high levels of participation becomes a powerful learning machine"

Participation is the single most important and largest part of your overall grade. Participation is mainly gained through actively engaging in the weekly discussions and activities in the class. There are several ways for you to obtain participation points. There is a more detailed explanation in the Introduction module in Canvas and how you can accumulate these points throughout the course.

Students are expected at all times to display respect to other classmates, particularly when it comes to discussions and interactions. This course encourages ideas and discussions among students, but maintains a premise of professionalism and courtesy.

WARNING!

Some lectures, content, videos and images contain strong language and graphic material that are suitable for a mature audiences only.

PREPARATION

"Anxiety is caused by a lack of control, organization, preparation and action."

Do your readings and watch/listen to the lectures. Be prepared by checking modules daily and keeping up with your assignments. Always ask questions when in doubt. I'm always available for my students any time.

CANVAS is where your class is housed. All the content and material for you to succeed in this class will be on Canvas.

HOW TO FIND



To access CANVAS through the SIS System go to:

mycollege.laccd.edu
(then click on CANVAS)

You can also download the CANVAS app for your electronic device through the App Store (Apple) or Google Play Store (Android) to access your Canvas courses. However, for optimum success in the class, you should have a reliable laptop or computer to use as your primary mode of technology.

EVALUATION



PLEASE REMEMBER...

I do not give grades, you *earn* them.

Grades are based wholly on the number of points you accumulate throughout the course.

Grading breaks down as follows
(out of 200 points):

A
180 points or higher

B
160 points or higher

C
140 points or higher

D
120 points or higher

F
below 120 points

These are the required components of the class:

Participation

You are expected to actively participate in this class. **IT'S THE SINGLE LARGEST COMPONENT OF YOUR GRADE.** Participation is mainly gained through actively engaging in the weekly discussions and activities in the class. There are several ways for you to obtain participation points.

Exams

Two exams (combinations of multiple choice, matching, short answer, map, and essay) covering the reading material, lectures, class discussion, film, and anything presented in class. There are **NO** makeups allowed for exams. Exams are open for a 16 hour period during Exam Week. Exams are closed-book, closed-notes and timed. **EXAMS ALWAYS CLOSE BEFORE 11:59 P.M. FRIDAYS OF EXAM WEEK.**

Quizzes

There is a quiz for each unit we cover. The 10 highest scoring quizzes will count towards your overall grade. Each quiz is worth 5 points. Quizzes **cannot be** made up. **Due dates for quizzes are found online in your modules as well as the assignment itself.**

Writing / Other

There will be at least one writing assignment along with other assignments as the semester progresses. More details will be available in the module throughout the semester.

The components of the class above break down to this below:

Participation	50 points
Exams (2)	100 points
Quizzes (10) 	50 points

LATE ASSIGNMENT POLICY

All assignments have firm due dates and are non-negotiable. There is plenty of time and notice on assignments and you are expected to adhere to these due dates/times.



10 Highest Quizzes

Only the 10 highest quizzes you score are counted

200
Total Points

SOME OTHER THINGS

SPECIAL ACCOMMODATIONS

Los Angeles Harbor College complies with the Americans with Disabilities Act (ADA) and section 504 of the Rehabilitation Act of 1973. Any student with a documented or suspected disability (physical, learning, or psychological) needing academic accommodations should contact the instructor and the Special Programs and Services office at (310) 233-4629, which is located in TECH 118.

TITLE IX

Title IX of the 1972 Education Amendment along with District Board Rule XV and Policy protects students and staff alike from discrimination based on sex, including Sexual Harassment and Sexual Assault which are forms of Sexual Misconduct. Under Title IX, all people in the educational environment must be treated equitably, regardless of sex, sexual orientation or expression, and/or transgender identity.

If you have experienced or learned of a possible violation of Title IX and/or would like to know about reporting options, resources, including confidential services, the law, or District policy, please do not hesitate to contact the College Title IX Coordinator or access the Title IX webpage through the link below:

Dr. Genice Sarcedo-Magruder (213) 891-2315 sarcedg@piercollege.edu

Additional information also is available through the college Title IX webpage:

https://effectiveness.lahc.edu/student_services/titleIX/SitePages/My_Options.aspx

Available Services for Student Success

ASSOCIATED STUDENTS ORGANIZATION (ASO) SERVICES

The ASO is located on the second floor of the Sea Hawk Center. Services provided include photocopying, laminating, typing and local faxing. The ASO membership fee is \$10 per semester and membership benefits provide discounts on numerous services (\$3 off parking fee, ten free copies, five free scantrons and five free examination [blue books] per semester).

LIKE SKILLS CENTER

The Life Skills Center was established to provide crisis intervention, personal counseling and community referrals to LAHC students who may be undergoing personal or life crisis. Located in the TECH 215, the Life Skills Center is staffed by advanced psychology graduate students and supervised by a clinical psychologist. Services are available by appointment (310) 233-4586

Contact the Life Skills Center for Semester Hours

Dr. Azeb B. Bhutia Bhutiaa@lahc.edu

FINANCIAL AID OFFICE

If you need help paying for books and other college expenses, call the Financial Aid Office at (310) 233-4320 or see them in the Services Administration Room SSA 116. The webpage is <http://www.lahc.edu/finaid>

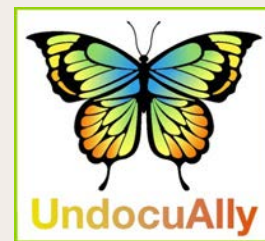
Student Code of Conduct

You are expected to know and follow all aspects of the Student Code of Conduct (found in the current LAHC Catalog). Please pay particular attention to the references covering cheating, plagiarism, academic dishonesty and that of disruptive behavior/defiance of authority, as these may be grounds for suspension and/or dismissal from class. According to the District Academic Dishonest Policy (9803.28), violations of integrity include, but are not limited to, the following actions: cheating on an exam, plagiarism, working together on an assignment, paper or project when the instructor has specifically stated students not to do so, submitting the same term paper to more than one instructor, or allowing another individual to assume one's identity for the purpose of enhancing one's grade.



LGBTQIA+ SAFE ZONE / UNDOCUALLY

Diversity and Inclusion have and continue to be hallmarks of our great Nation. I stand and support ALL!



THE LITERACY CENTER

Students receive tutorial assistance with common writing concerns such as thesis statements, organization, clarity, grammar and punctuation, as well as access to computers for word processing and online research. The Literacy Center will work with you on any weak areas pointed out by your instructor, explain corrections and help you become your own editor. The Literacy Center is located in LLRC 103B and is open:

Monday & Wednesday 11am - 5pm

Tuesday & Thursday 9am - 3pm

Friday 10am - 2pm

LIBRARY STUDY ROOMS

Study rooms are available for group (minimum of two individuals) study only and must be reserved online at

<http://lahc.libcal.com/booking/studyrooms>. Walk-ins are not allowed. Each student must check-in at the circulation desk as a group prior to use of the room. Study rooms are available to current students for up to two hours per day per group and are reserved with an [@student.laccd.edu](mailto:student.laccd.edu) email address.

COURSE SCHEDULE

The instructor reserves the right to alter the course schedule based upon the needs of the class.



MODULE	TOPICS	READINGS
INTRO MODULE	Introduction to the course	Read entire "Introduction" Module on Canvas
	INTRODUCTION ASSIGNMENT, PART 1	DUE BY 11:59 P.M. WEDNESDAY JUNE 15
	INTRODUCTION ASSIGNMENT, PART 2	DUE BY 11:59 P.M. FRIDAY JUNE 17
MODULE 1	First Peoples	Ways of the World: Chapter 1
MODULE 1	First Civilizations	Ways of the World: Chapter 2
MODULE 2	State/Empire in Eurasia/North Africa	Ways of the World: Chapter 3
MODULE 2	Culture/Religion in Eurasia/North Africa	Ways of the World: Chapter 4
MODULE 2	Society/Inequality in Eurasia/North Africa	Ways of the World: Chapter 5
MODULE 3	Commonalities/Variations in Africa/Americas/Pacific	Ways of the World: Chapter 6
MODULE 3	EXAM 1	EXAM 1 CLOSSES AT 11:59 P.M. SUNDAY JULY 3
MODULE 4	Essay Preparation Module	
MODULE 4	Commerce and Culture	Ways of the World: Chapter 7
MODULE 4	China and the World	Ways of the World: Chapter 8
MODULE 4	Worlds of Islam	Ways of the World: Chapter 9
MODULE 5	Worlds of Christianity	Ways of the World: Chapter 10
MODULE 5	Mongols and Nomads	Ways of the World: Chapter 11
MODULE 5	15th Century	Ways of the World: Chapter 12
MODULE 5	EXAM 2	EXAM 1 CLOSSES AT 11:59 P.M. SUNDAY JULY 17